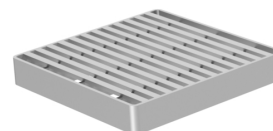
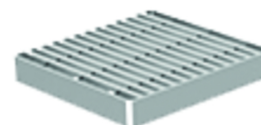
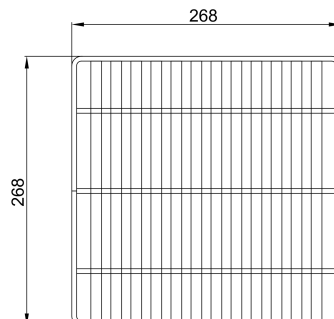


Heelsafe Grate - 316L SS

Product information

- BIM models are available in ACO Building Drainage BIM Revit libraries
- Certified according to EN 1253-1 (316L) grade stainless steel
- Slip resistant solution available
- Available for load class L 15
- Hygienic design following EN 1672, EN ISO 14159 and EHEDG document No. 8, 13, 44 is not applied for this product



Item Technical Data

Slip resistant	Gully top size compatibility	Grating dimensions	Class	Material
		Size [mm]		
Without slip resistance	Gully top size: 300 x 300 mm	268 x 268	L 15	1.4404

For more information please visit:
<https://www.wicketts-aco.com>